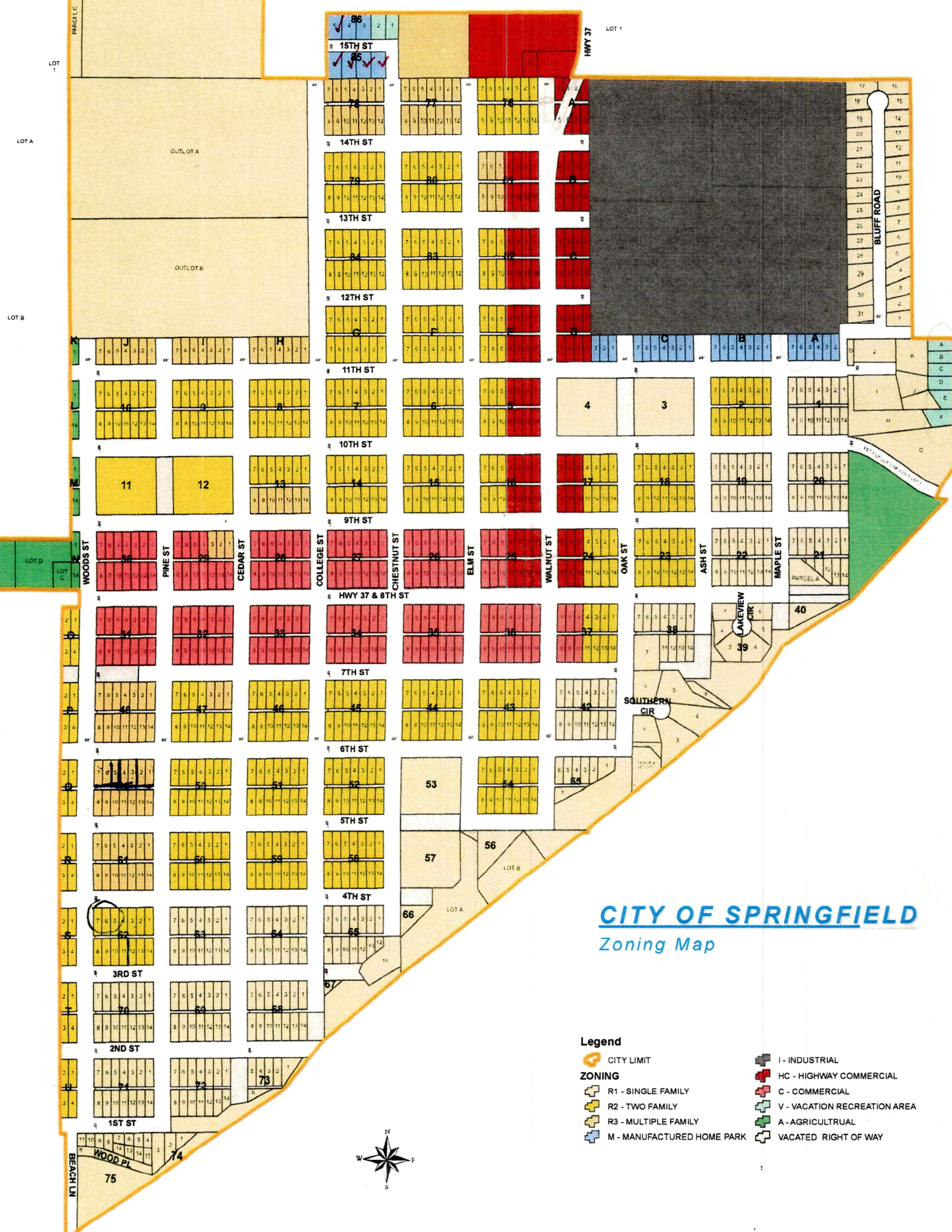


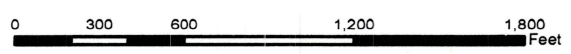
E1/2  
E1/2  
NW1/4  
NE1/4

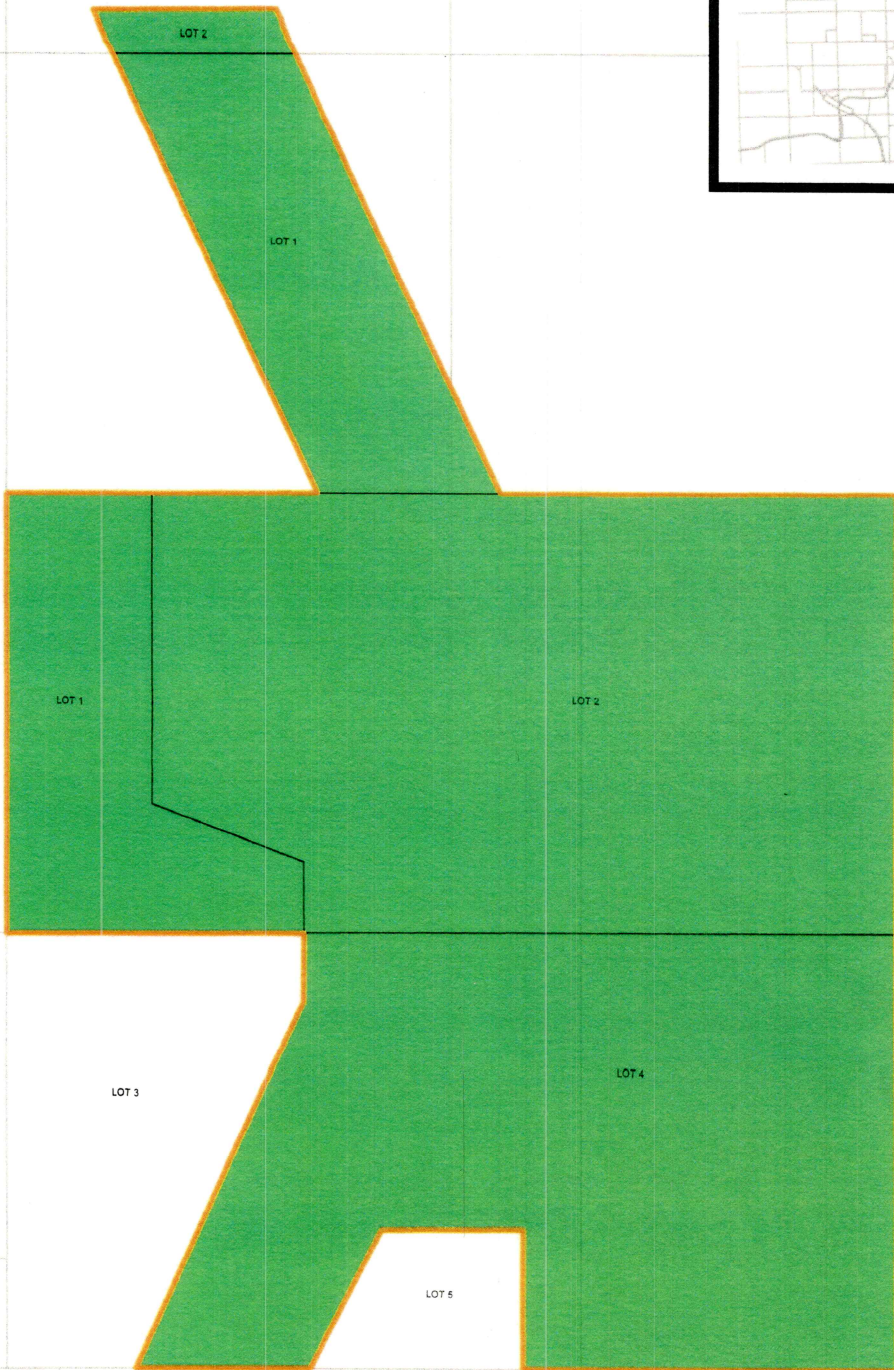
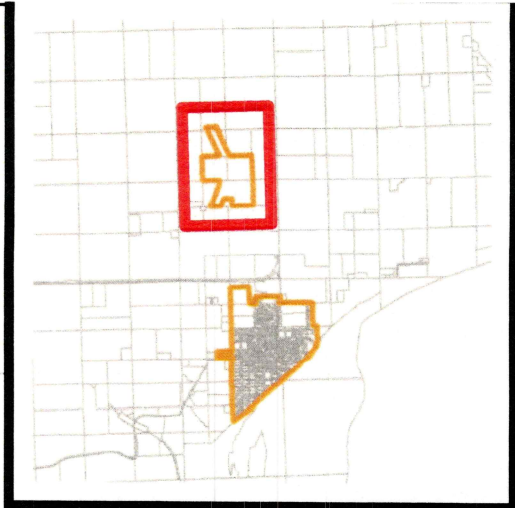


# CITY OF SPRINGFIELD

## Zoning Map

- Legend**
- CITY LIMIT
  - ZONING**
  - R1 - SINGLE FAMILY
  - R2 - TWO FAMILY
  - R3 - MULTIPLE FAMILY
  - M - MANUFACTURED HOME PARK
  - I - INDUSTRIAL
  - HC - HIGHWAY COMMERCIAL
  - C - COMMERCIAL
  - V - VACATION RECREATION AREA
  - A - AGRICULTURAL
  - VACATED RIGHT OF WAY





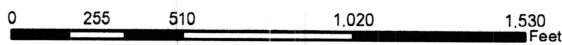
**Legend**

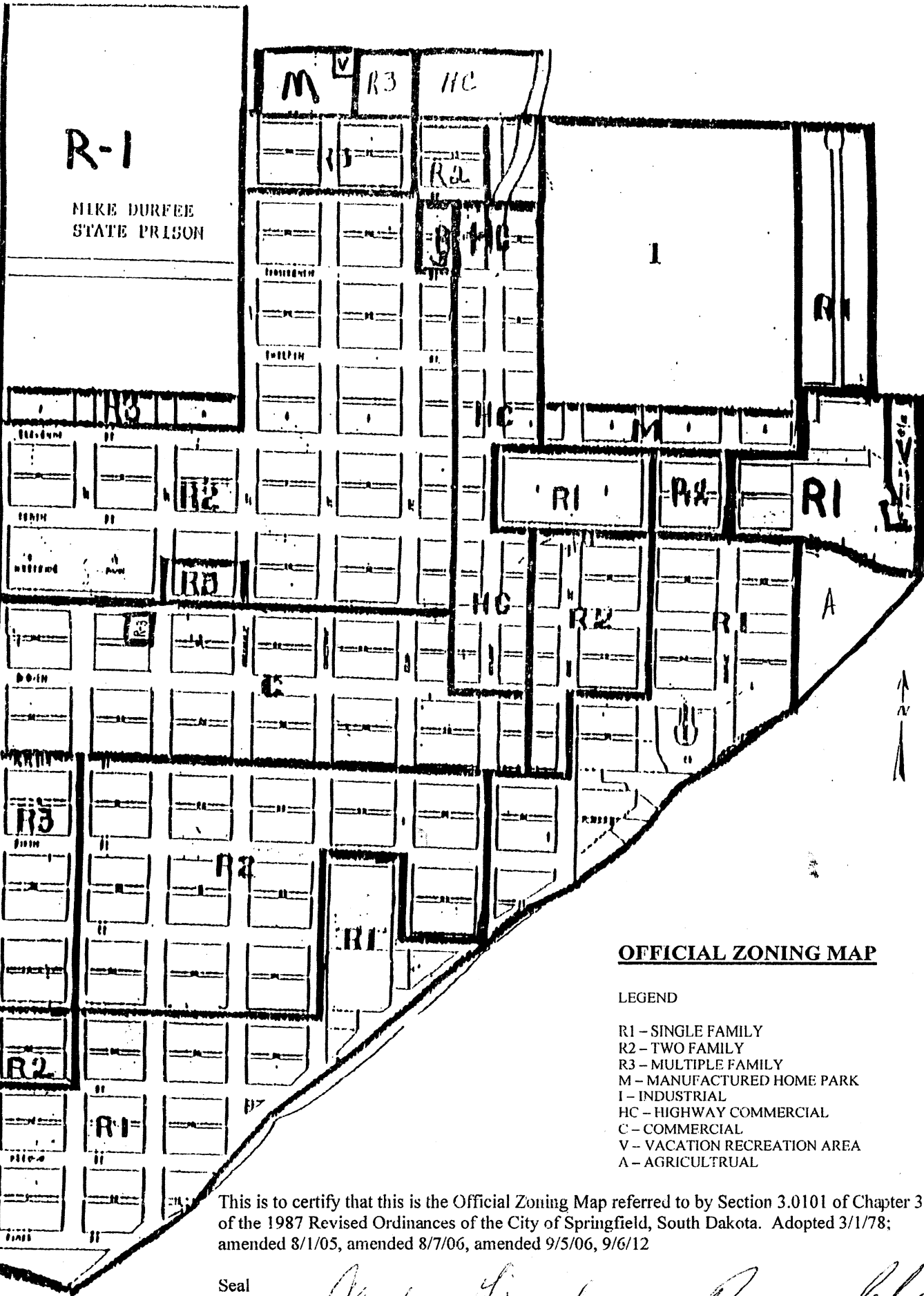
- LOT
- CITY LIMIT

**ZONING**

- R1 - SINGLE FAMILY
- R2 - TWO FAMILY
- R3 - MULTIPLE FAMILY
- M - MANUFACTURED HOME PARK

- I - INDUSTRIAL
- HC - HIGHWAY COMMERCIAL
- C - COMMERCIAL
- V - VACATION RECREATION AREA
- A - AGRICULTURAL
- VACATED RIGHT OF WAY





**OFFICIAL ZONING MAP**

- LEGEND
- R1 - SINGLE FAMILY
  - R2 - TWO FAMILY
  - R3 - MULTIPLE FAMILY
  - M - MANUFACTURED HOME PARK
  - I - INDUSTRIAL
  - HC - HIGHWAY COMMERCIAL
  - C - COMMERCIAL
  - V - VACATION RECREATION AREA
  - A - AGRICULTURAL

This is to certify that this is the Official Zoning Map referred to by Section 3.0101 of Chapter 3.01 of the 1987 Revised Ordinances of the City of Springfield, South Dakota. Adopted 3/1/78; amended 8/1/05, amended 8/7/06, amended 9/5/06, 9/6/12

Seal

Attest: *Candace Grassel*  
Finance Officer

*Norman Scholte*  
Mayor

Springfield  
Municipal Airport

